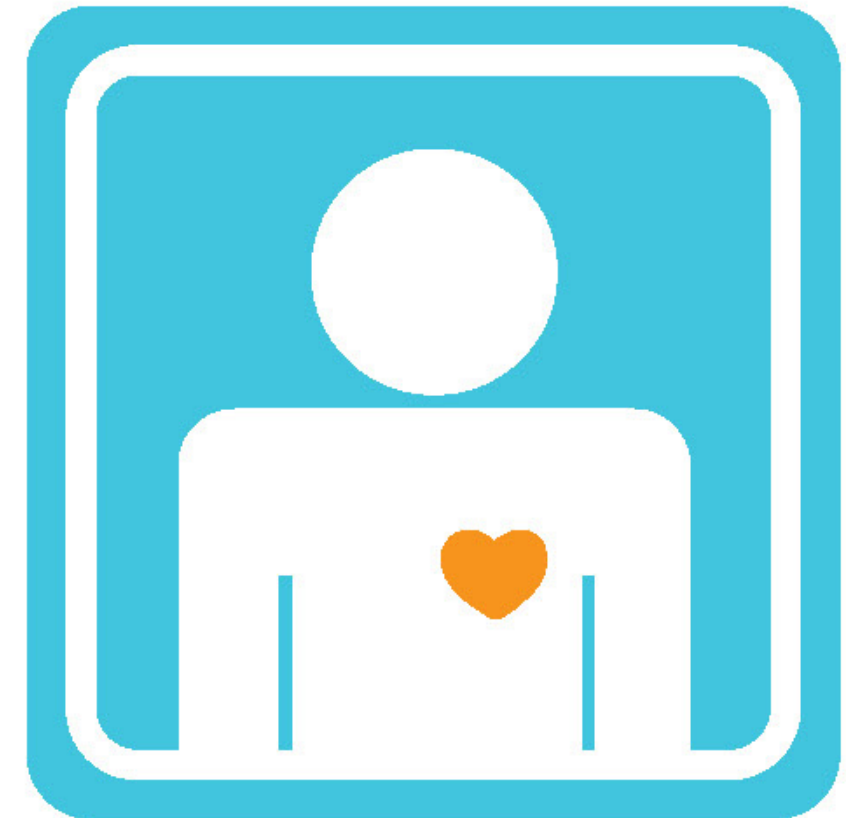




Our goal is to make a positive difference in the lives of young children from economically challenged families in our community. Florence Fuller Child Development Centers provide quality childcare, early education, family support programs and the only Head Start preschool in Boca Raton. We prepare children for a lifetime commitment to learning and social achievement, while empowering their families to build a brighter future.

Florence Fuller  
Child Development Centers  
Is proud to present



**Men w/Caring Hearts**

---

Florence Fuller Child Development Center  
200 NE 14th Street  
Boca Raton, FL 33432  
561 391-7274 ext. 111  
[www.ffcdc.org](http://www.ffcdc.org)

Thursday, April 26, 2012  
Boca West Country Club, Boca Raton

Co-chairs: Jay DiPietro and Jason Solodkin

**Men With Caring Hearts**  
**April 26, 2012**  
**Sponsorship Opportunities**

**Architect - Presenting Sponsor \$20,000**

- *Presented by* (with name or logo) prominently featured on all MWCH's marketing materials and press releases including cover of program.
- Company or individual featured in FFCDC e-newsletter.
- Name or Logo featured on FFCDC website, Facebook and listed in annual report.
- Inside cover placement of a full-page color advertisement in the program book.
- Invitation to Honoree Reception.
- Twelve tickets with premium seating at luncheon.
- Option of providing opening comments at luncheon
- Sponsorship package includes a donation of \$2500 to be awarded to the 2012 MWCH winner's charity of choice.

**Chief Engineer - \$10,000**

- Sponsorship listed on all MWCH's marketing materials and press releases materials.
- Name or Logo featured on FFCDC website, Facebook and listed in annual report.
- Inside back cover placement of a full-page color advertisement in the program book.
- Invitation to Honoree Reception.
- Ten tickets to luncheon.

**General Contractor - \$5,000**

- Sponsorship listed on all MWCH's marketing materials and press releases.
- Name listed on FFCDC website, Facebook and annual report.
- Full page black and white advertisement in program book.
- Invitation to Honoree Reception.
- Six tickets to luncheon.

**Project Manager- \$2,500**

- Sponsorship listed on all MWCH's marketing materials and press releases.
- Name listed on FFCDC website, Facebook and annual report.
- Half page black and white advertisement in program book.
- Invitation to Honoree Reception.
- Four tickets to luncheon.

**Foreman—\$1,000**

- Sponsorship listed on all MWCH's marketing materials and press releases.
- Name listed on FFCDC website, Facebook and annual report.
- Quarter page black and white advertisement in program book.
- Invitation to Honoree Reception.
- Two tickets to luncheon.

**Men With Caring Hearts**  
**Additional Opportunities**

**Showcase your company and help us defray the cost of the following:**

**Valet: *Only one available—\$2,500***

- Opportunity to provide and place thank you note and gift in cars.
- Two tickets to luncheon.
- Sponsorship listed on all MWCH's marketing materials and press releases
- Name listed on FFCDC website, Facebook and annual report.
- Invitation to Honoree Reception.
- Recognition signage at valet station.
- Half page black and white advertisement in program book.

**Favor: *Only one available—\$2,500***

- Opportunity to provide a favor to guest.
- Two tickets to luncheon.
- Sponsorship listed on all MWCH's marketing materials and press releases.
- Name listed on FFCDC website, Facebook and annual report.
- Invitation to Honoree Reception.
- Half page black and white advertisement in program book

---

**Program Advertisements— Copy deadline April 6, 2012**

- \_\_\_ \$1,000 Full-page black and white advertisement/message
- \_\_\_ \$500 Half-page black and white advertisement/message
- \_\_\_ \$250 Quarter-page black and white advertisement/message
- \_\_\_ My camera ready artwork will be e-mailed in a high resolution jpeg or pdf format to hwallace@ffcdc.org.

\_\_\_ Please help create a message - see contract or attach separate sheet of paper: \*

Note— A photo can be added to your message. Email photo to hwallace@ffcdc.org.

**Advertisement Dimensions:**

Full page:      Half page:      Quarter page:  
6.5" w x 8" h    6.5" w x 4" h    3.25" w x 4" h

**For questions or more information, contact Hillary Wallace,  
561 391-7274, ext. 128 or email hwallace@ffcdc.org**

**Special Advertising Rate for Non-profits**

\_\_\_ \$500 B/W Full pg. \_\_\_ \$250 B/W Half pg. \_\_\_ \$125 B/W Qtr.